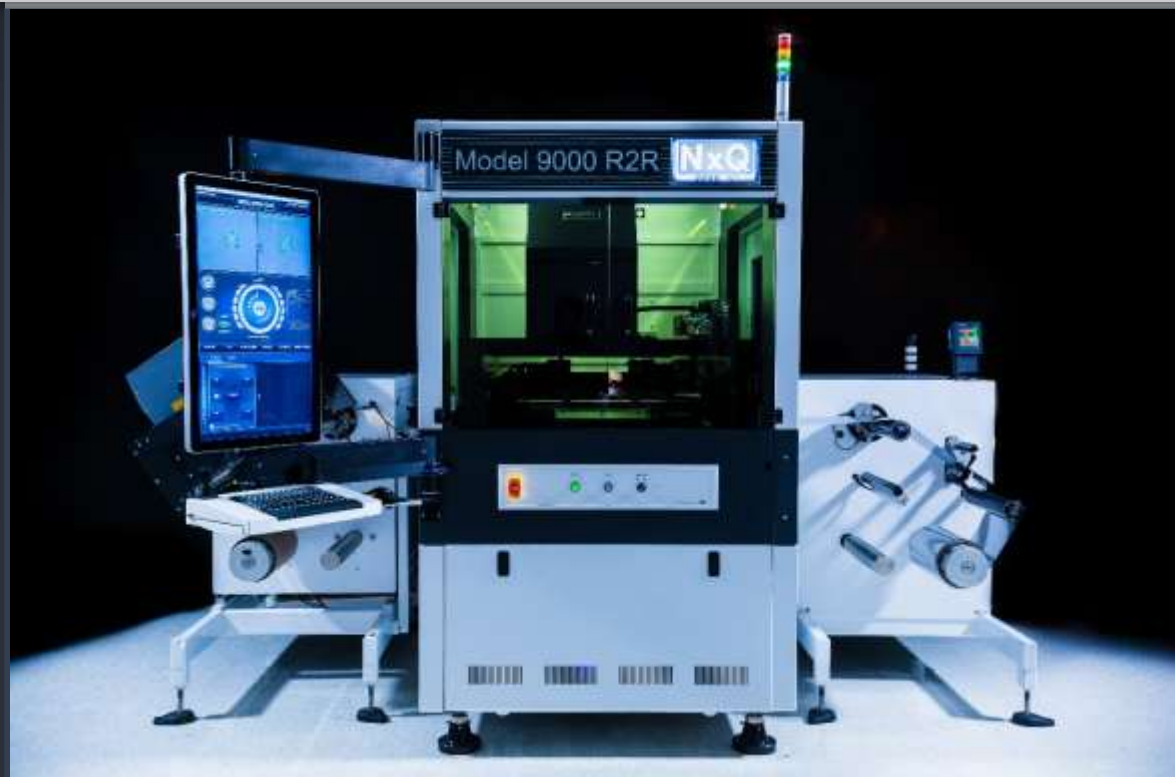


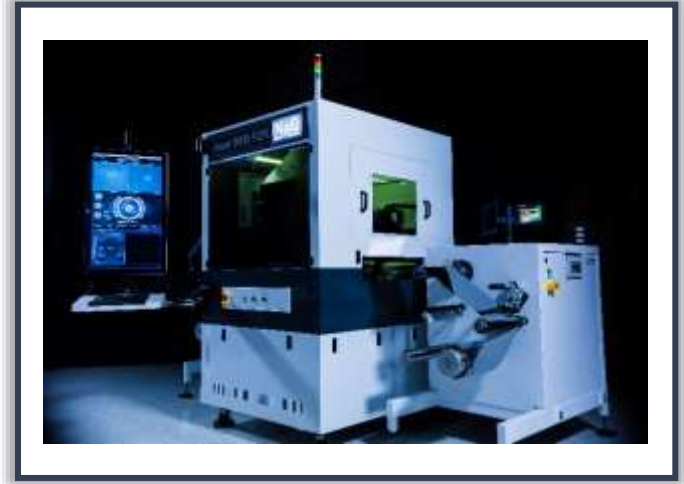
NXQ9000 Series Proximity Stepper



Flexible Displays
Flexible Electronics
Product Security
Anti-Counterfeiting
Product Validation
Near Field Communication
(NFC)
RFID
Wearable Electronics
Solar Cells
Energy Harvesting
Sensors

- The industry's first proximity stepper!
- Accommodates substrates up to 320mm Square and can be expanded to larger sizes.
- Available with manual substrate loading, robotic loading or reel to reel formats as shown above.
- Poly Chromatic UV-LED lamphouse for long life, low power consumption and low cost of ownership.
- Full Field global Alignment or step and repeat alignment and exposure modes, recipe set.

NXQ9000 Series Proximity Stepper



- Recipe set field shutters, 100mm X 100mm up to 320mm X 320mm
- Print Resolution
 - $\geq 3.5\mu\text{m}$ at $20\mu\text{m}$ gap
 - $\geq 2\mu\text{m}$ in soft contact
- Throughput with Reel to Reel (based on 1 second exposure)
 - 1st Mask Mode: 180 Substrates per hour
 - Full-Field Align and Expose: (140) Substrates per hour
 - Four-Shot Align and Expose: (80) Substrates per hour
 - Nine-Shot Align and Expose: (35) Substrates per hour
- Overlay
 - $\pm 1.5\mu\text{m}$ 3 Sigma